



NATA LIGHTING CO.,LTD.
www.nata.cn
Email:info@nata.com
Tel:+86-750-3770000 Fax:+86 750 3771111
Address:Address:380JinOu Road,GaoXin Zone,Jiang Men City,Guangdong,China

Nata

Client:

LumCAT: 2-2760-L

Luminaire: 92.70.411.00

Report No: 2024902-B016

Ballast type: AC

Test No: 2024902-C016

Voltage(V): 36.610

LampCAT: LUMILEDS LUXEON CoB 1208 Current(A): 0.897

Lamp flux(lm): 4053.0 Power (W): 32.850

Number of Lamps: 1 PF: 0.000

Length(mm): 0 Width(mm): 0

Phm Type: C Height(mm): 0

Photometric Results

Lumens(lm): 3759.69, Efficiency(%): 92.76% , Luminous Efficacy(lm/W): 114.45

Central intensity(cd): 5490.994, Maximum intensity(cd): 5499.555

Angle of maximum intensity: C=0.0 γ =3.0

Beam Angle(50%Imax): [C0/180]Total=51.0

[C90/270]Total=51.0

Field angle(10%Imax): [C0/180]Total=73.6

[C90/270]Total=73.6

Maximum s/h(1/2): C0_180=0.81 C90_270=0.81

Maximum s/h(1/4): C0_180=0.79 C90_270=0.79

Up flux rate of lamp(%): 0.00%

Down flux rate of lamp(%): 92.76%

Up flux rate of LUM(%): - -

Down flux rate of LUM(%): 100.00%

CIE Type : Direct lighting

Output flux ratio in π solid angle : 99.419%

Equipment: GMS 1800
Temperature(°C): 25.0

Date: 2024/9/2
Humidity(%): 60.0%

Operator: NT
Distance(m): 7.25

$\gamma(^{\circ})$	Average I(cd)	Zonal F(lm)	Sum F(lm)	Eff Flux(%)	Eff Sum(%)
0.0	5490.994	0.000	0	0.00%	0.00%
1.0	5493.083	5.256	5.256	0.13%	0.14%
2.0	5497.400	15.775	21.03	0.39%	0.56%
3.0	5499.555	26.301	47.331	0.65%	1.26%
4.0	5496.848	36.808	84.14	0.91%	2.24%
5.0	5481.592	47.229	131.369	1.17%	3.49%
6.0	5462.433	57.514	188.882	1.42%	5.02%
7.0	5422.459	67.562	256.445	1.67%	6.82%
8.0	5374.962	77.275	333.72	1.91%	8.88%
9.0	5316.040	86.645	420.364	2.14%	11.18%
10.0	5250.232	95.621	515.985	2.36%	13.72%
11.0	5177.584	104.195	620.181	2.57%	16.50%
12.0	5091.710	112.258	732.439	2.77%	19.48%
13.0	4986.755	119.606	852.045	2.95%	22.66%
14.0	4886.190	126.373	978.418	3.12%	26.02%
15.0	4749.344	132.281	1110.698	3.26%	29.54%
16.0	4603.358	137.043	1247.742	3.38%	33.19%
17.0	4445.828	140.920	1388.662	3.48%	36.94%
18.0	4264.882	143.621	1532.283	3.54%	40.76%
19.0	4070.992	145.027	1677.31	3.58%	44.61%
20.0	3868.396	145.313	1822.623	3.59%	48.48%
21.0	3656.596	144.495	1967.118	3.57%	52.32%
22.0	3446.622	142.742	2109.86	3.52%	56.12%
23.0	3240.544	140.315	2250.175	3.46%	59.85%
24.0	3039.545	137.305	2387.48	3.39%	63.50%
25.0	2843.421	133.766	2521.246	3.30%	67.06%
26.0	2650.858	129.693	2650.939	3.20%	70.51%
27.0	2472.770	125.351	2776.289	3.09%	73.84%
28.0	2268.571	120.041	2896.33	2.96%	77.04%
29.0	2068.058	113.458	3009.789	2.80%	80.05%
30.0	1814.549	104.830	3114.618	2.59%	82.84%
31.0	1617.801	95.517	3210.136	2.36%	85.38%
32.0	1425.988	87.201	3297.337	2.15%	87.70%
33.0	1196.953	77.273	3374.609	1.91%	89.76%
34.0	1027.709	67.325	3441.934	1.66%	91.55%
35.0	847.662	58.242	3500.176	1.44%	93.10%
36.0	674.265	48.458	3548.635	1.20%	94.39%
37.0	511.519	38.674	3587.308	0.95%	95.42%

$\gamma(^{\circ})$	Average I(cd)	Zonal F(lm)	Sum F(lm)	Eff Flux(%)	Eff Sum(%)
38.0	379.652	29.746	3617.054	0.73%	96.21%
39.0	293.916	22.991	3640.045	0.57%	96.82%
40.0	201.025	17.262	3657.307	0.43%	97.28%
41.0	143.469	12.267	3669.574	0.30%	97.60%
42.0	123.029	9.682	3679.257	0.24%	97.86%
43.0	88.371	7.831	3687.087	0.19%	98.07%
44.0	74.100	6.132	3693.22	0.15%	98.23%
45.0	63.305	5.281	3698.5	0.13%	98.37%
46.0	55.013	4.627	3703.127	0.11%	98.50%
47.0	48.857	4.131	3707.259	0.10%	98.61%
48.0	42.438	3.691	3710.949	0.09%	98.70%
49.0	37.917	3.300	3714.249	0.08%	98.79%
50.0	34.258	3.009	3717.258	0.07%	98.87%
51.0	30.775	2.751	3720.01	0.07%	98.94%
52.0	28.036	2.524	3722.533	0.06%	99.01%
53.0	25.972	2.349	3724.883	0.06%	99.07%
54.0	23.837	2.195	3727.078	0.05%	99.13%
55.0	22.280	2.059	3729.137	0.05%	99.19%
56.0	20.723	1.943	3731.08	0.05%	99.24%
57.0	19.356	1.833	3732.912	0.05%	99.29%
58.0	18.127	1.733	3734.646	0.04%	99.33%
59.0	17.017	1.643	3736.289	0.04%	99.38%
60.0	16.012	1.560	3737.849	0.04%	99.42%
61.0	15.066	1.483	3739.332	0.04%	99.46%
62.0	14.198	1.410	3740.742	0.03%	99.50%
63.0	13.403	1.342	3742.085	0.03%	99.53%
64.0	12.654	1.279	3743.363	0.03%	99.57%
65.0	11.938	1.217	3744.58	0.03%	99.60%
66.0	11.347	1.162	3745.742	0.03%	99.63%
67.0	10.762	1.112	3746.854	0.03%	99.66%
68.0	10.250	1.064	3747.918	0.03%	99.69%
69.0	9.632	1.014	3748.933	0.03%	99.71%
70.0	9.093	0.962	3749.894	0.02%	99.74%
71.0	8.633	0.916	3750.81	0.02%	99.76%
72.0	8.141	0.872	3751.683	0.02%	99.79%
73.0	7.654	0.826	3752.509	0.02%	99.81%
74.0	7.240	0.783	3753.292	0.02%	99.83%
75.0	6.754	0.739	3754.031	0.02%	99.85%

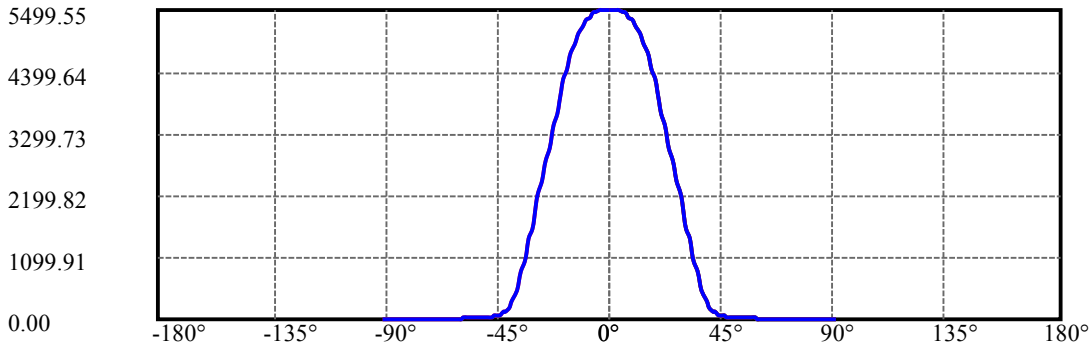
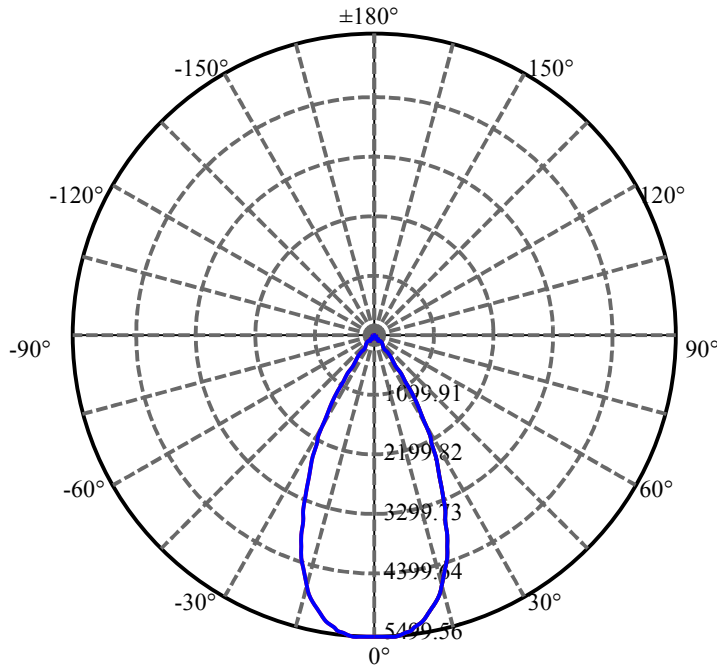
$\gamma(^{\circ})$	Average I(cd)	Zonal F(lm)	Sum F(lm)	Eff Flux(%)	Eff Sum(%)
76.0	6.255	0.691	3754.722	0.02%	99.87%
77.0	5.802	0.643	3755.365	0.02%	99.89%
78.0	5.342	0.597	3755.961	0.01%	99.90%
79.0	4.849	0.548	3756.509	0.01%	99.92%
80.0	4.343	0.496	3757.004	0.01%	99.93%
81.0	3.922	0.447	3757.451	0.01%	99.94%
82.0	3.489	0.402	3757.853	0.01%	99.95%
83.0	3.049	0.355	3758.208	0.01%	99.96%
84.0	2.668	0.311	3758.52	0.01%	99.97%
85.0	2.372	0.275	3758.795	0.01%	99.98%
86.0	2.043	0.241	3759.036	0.01%	99.98%
87.0	1.735	0.207	3759.243	0.01%	99.99%
88.0	1.452	0.175	3759.417	0.00%	99.99%
89.0	1.196	0.145	3759.563	0.00%	100.00%
90.0	1.084	0.125	3759.688	0.00%	100.00%

ZONAL LUMEN SUMMARY

Zone	Lumens	%Lamp	%Fixt
0-30	3114.62	76.85%	82.84%
0-40	3657.31	90.24%	97.28%
0-60	3737.85	92.22%	99.42%
0-90	3759.56	92.76%	100.00%
0-120	3759.56	92.76%	100.00%
0-180	3759.69	92.76%	100.00%
60-90	21.71	0.54%	0.58%
90-120	0.00	0.00%	0.00%
90-130	0.00	0.00%	0.00%
90-150	0.00	0.00%	0.00%
90-180	0.00	0.00%	0.00%
0-28.98	3007.75	74.21%	80.00%

ZONAL LUMEN SUMMARY

0-10	515.99
10-20	1306.64
20-30	1292.00
30-40	542.69
40-50	59.95
50-60	20.59
60-70	12.05
70-80	7.11
80-90	2.56
90-100	0.00
100-110	0.00
110-120	0.00
120-130	0.00
130-140	0.00
140-150	0.00
150-160	0.00
160-170	0.00
170-180	0.00



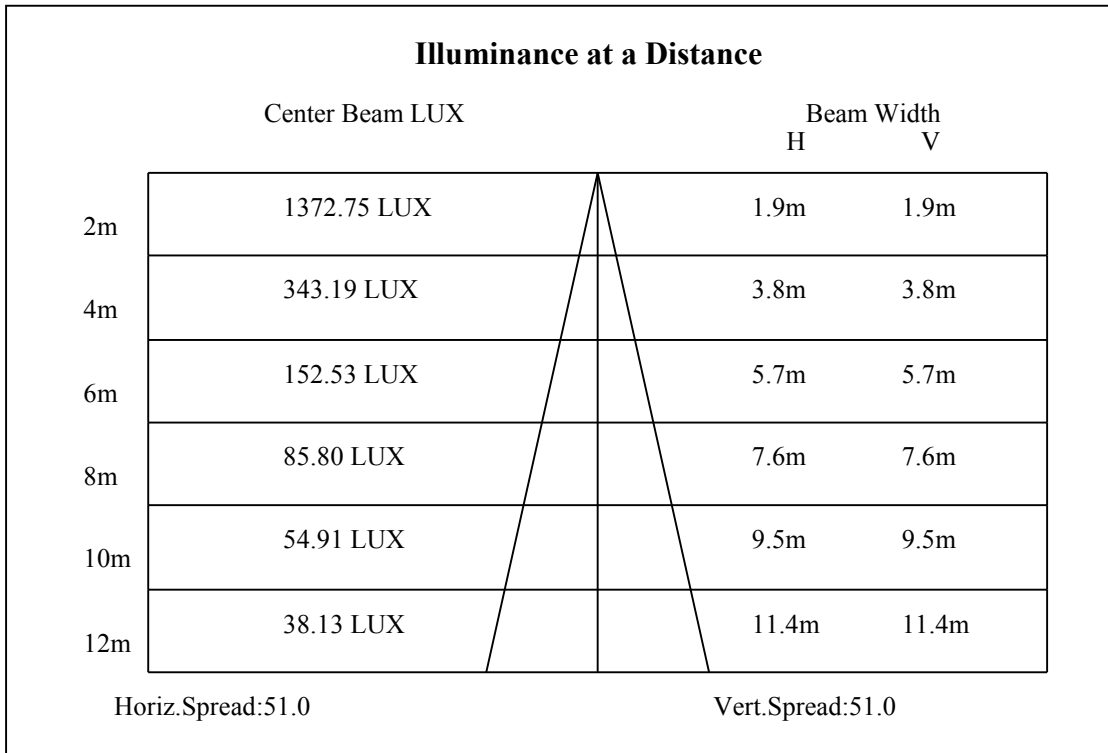
C0(Max): —————

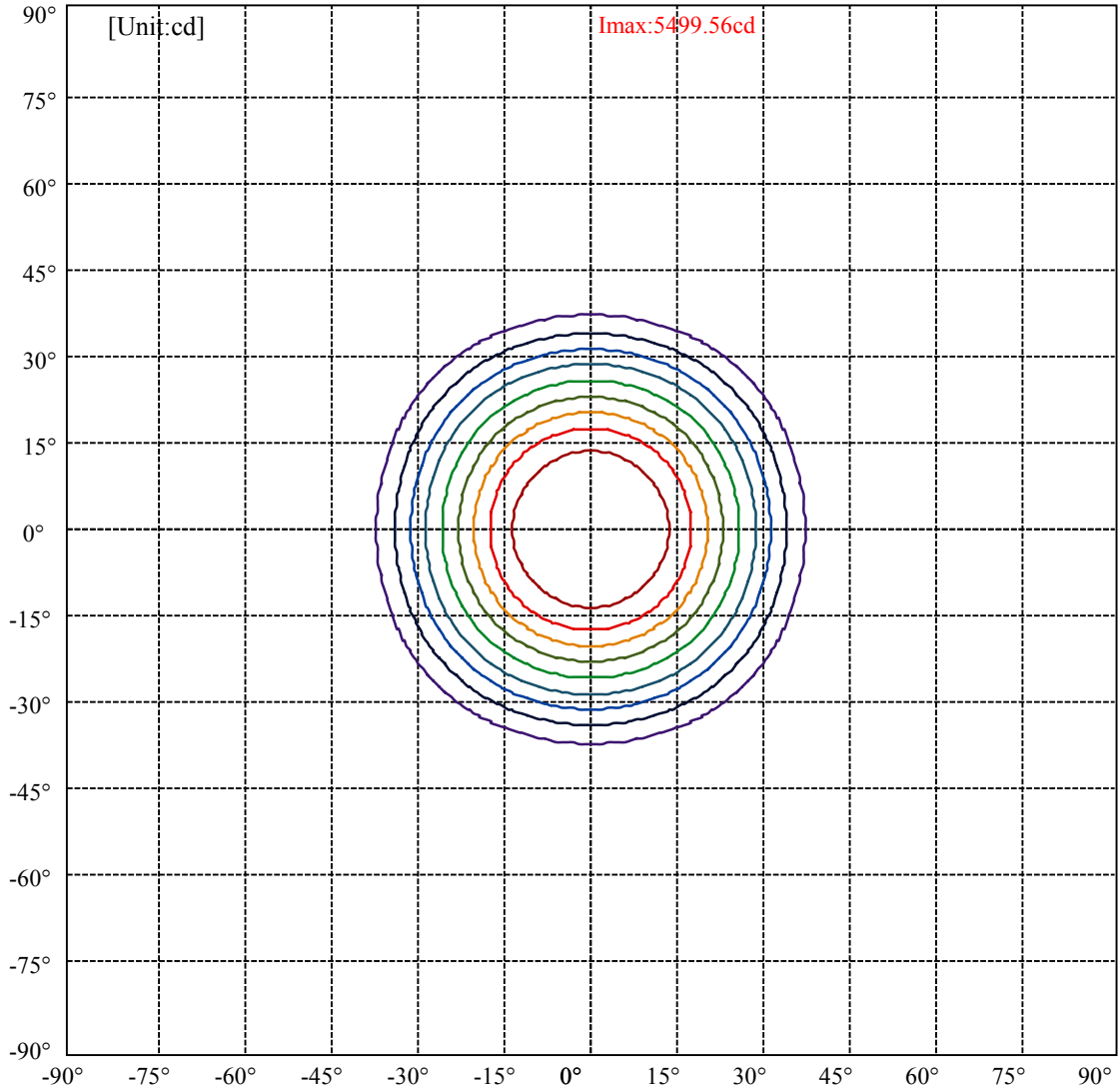
C0/C180: —————

C90/C270: —————

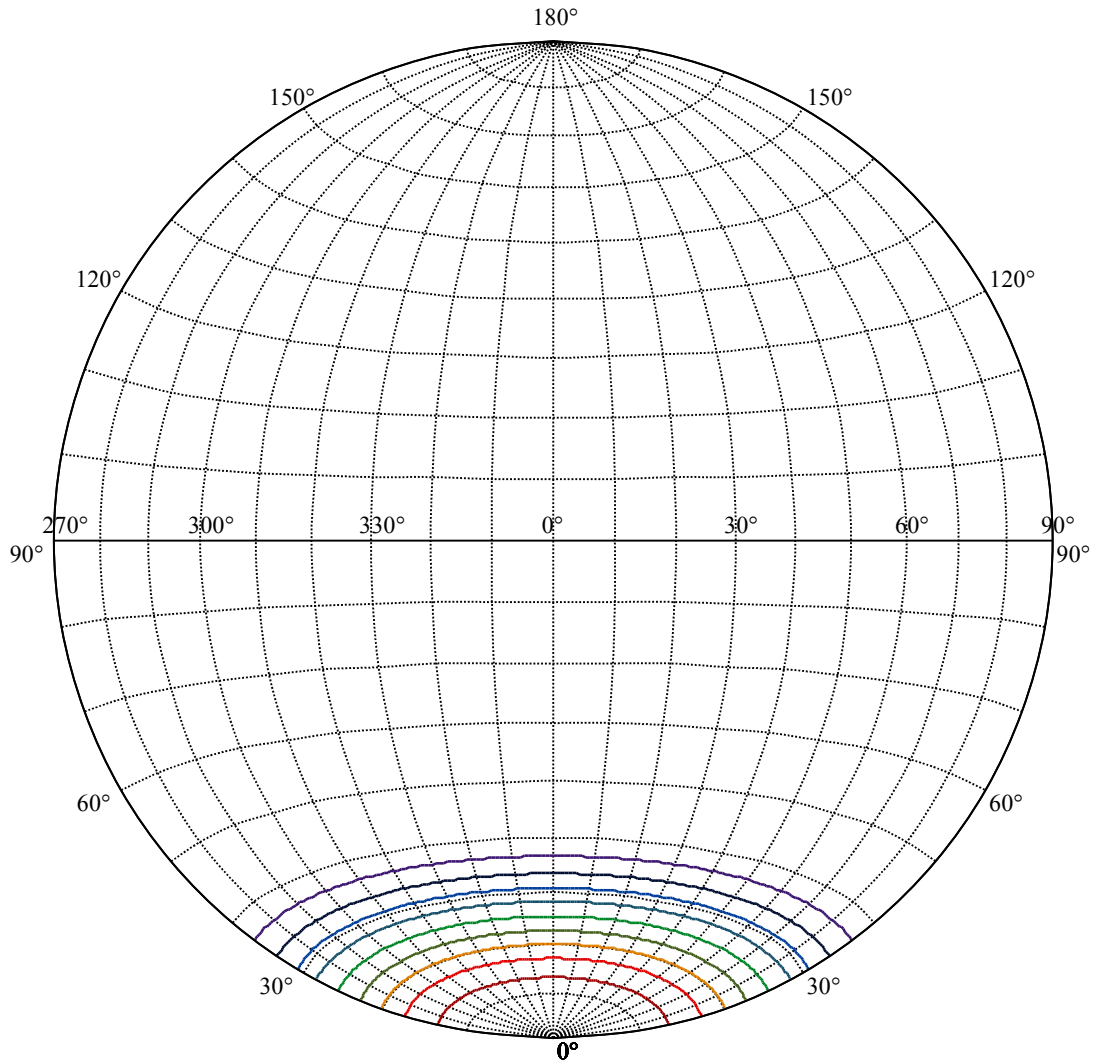
Field angle(10%Imax):C0/180Left:39.8 Right:33.8
:C90/270Left:39.8 Right:33.8

Beam Angle(50%Imax):C0/180Left:28.5 Right:22.5
:C90/270Left:28.5 Right:22.5





(10%Imax) 549.955	—
(20%Imax) 1099.91	—
(30%Imax) 1649.87	—
(40%Imax) 2199.82	—
(50%Imax) 2749.78	—
(60%Imax) 3299.73	—
(70%Imax) 3849.69	—
(80%Imax) 4399.64	—
(90%Imax) 4949.6	—



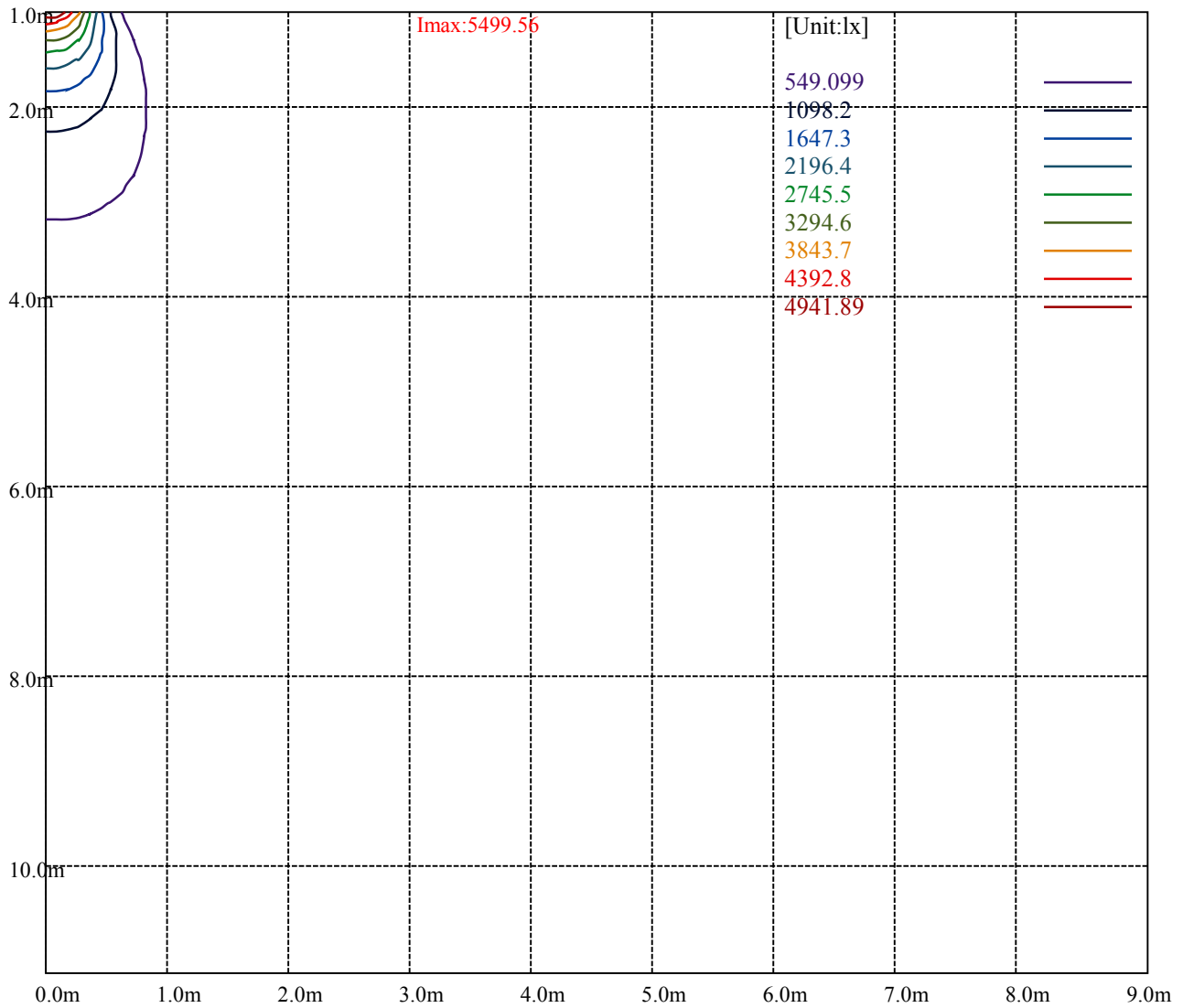
House

[Unit:cd]

Road

Imax:5499.56

(10%Imax) 549.955	—
(20%Imax) 1099.91	—
(30%Imax) 1649.87	—
(40%Imax) 2199.82	—
(50%Imax) 2749.78	—
(60%Imax) 3299.73	—
(70%Imax) 3849.69	—
(80%Imax) 4399.64	—
(90%Imax) 4949.6	—



Luminance Table

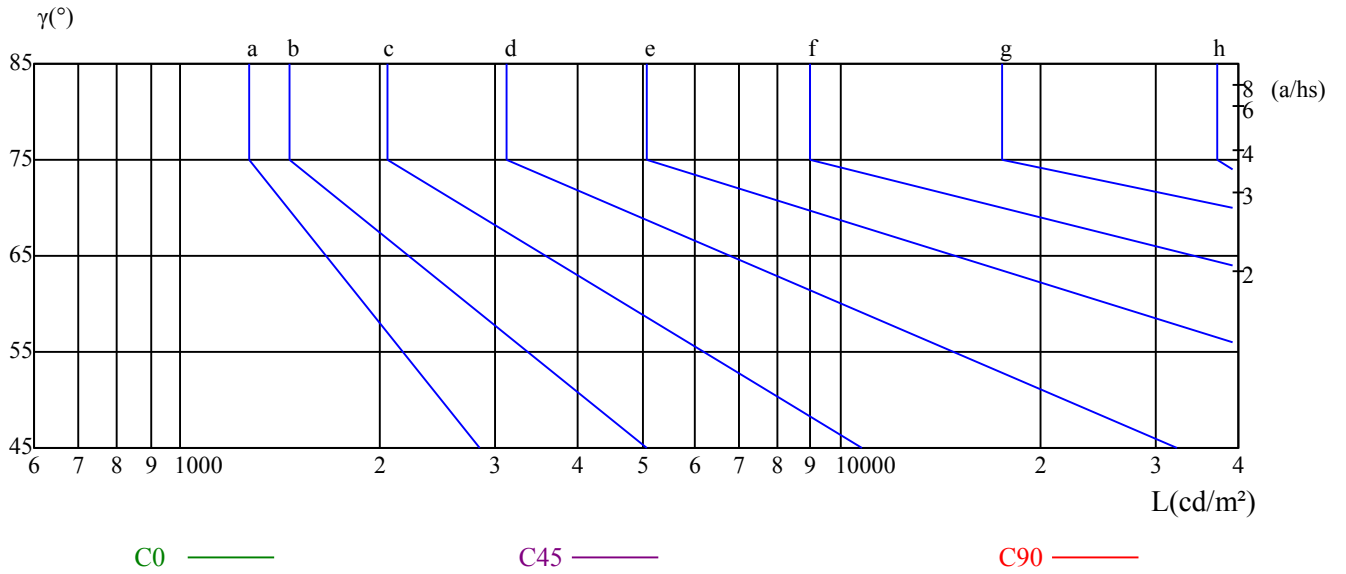
γ	45	50	55	60	65	70	75	80	85
C0	0	0	0	0	0	0	0	0	0
C45	0	0	0	0	0	0	0	0	0
C90	0	0	0	0	0	0	0	0	0

L(Hor)(65)	L(Ver)(65)	L45(65)	L(Hor)(75)	L(Ver)(75)	L45(75)	L(Hor)(85)	L(Ver)(85)	L45(85)
0	0	0	0	0	0	0	0	0

Glare Table

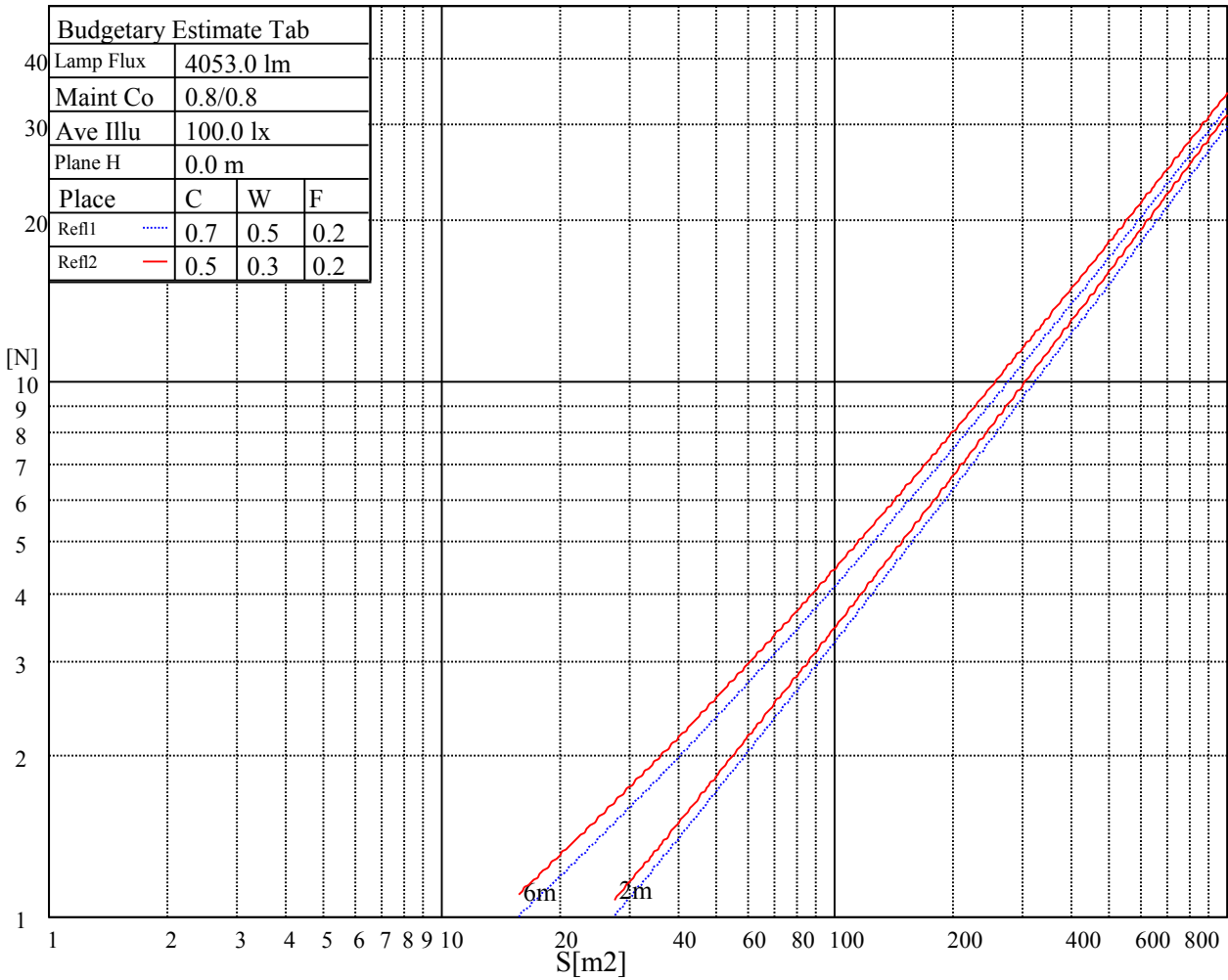
Glare	Quality	Service Values Illuminance(lx)							
1.15	A	2000	1000	500	<=300				
1.5	B		2000	1000	500	<=300			
1.85	C			2000	1000	500	<=300		
2.2	D				2000	1000	500	<=300	
2.55	E					2000	1000	500	<=300
		a	b	c	d	e	f	g	h

Luminance Limiting Curve

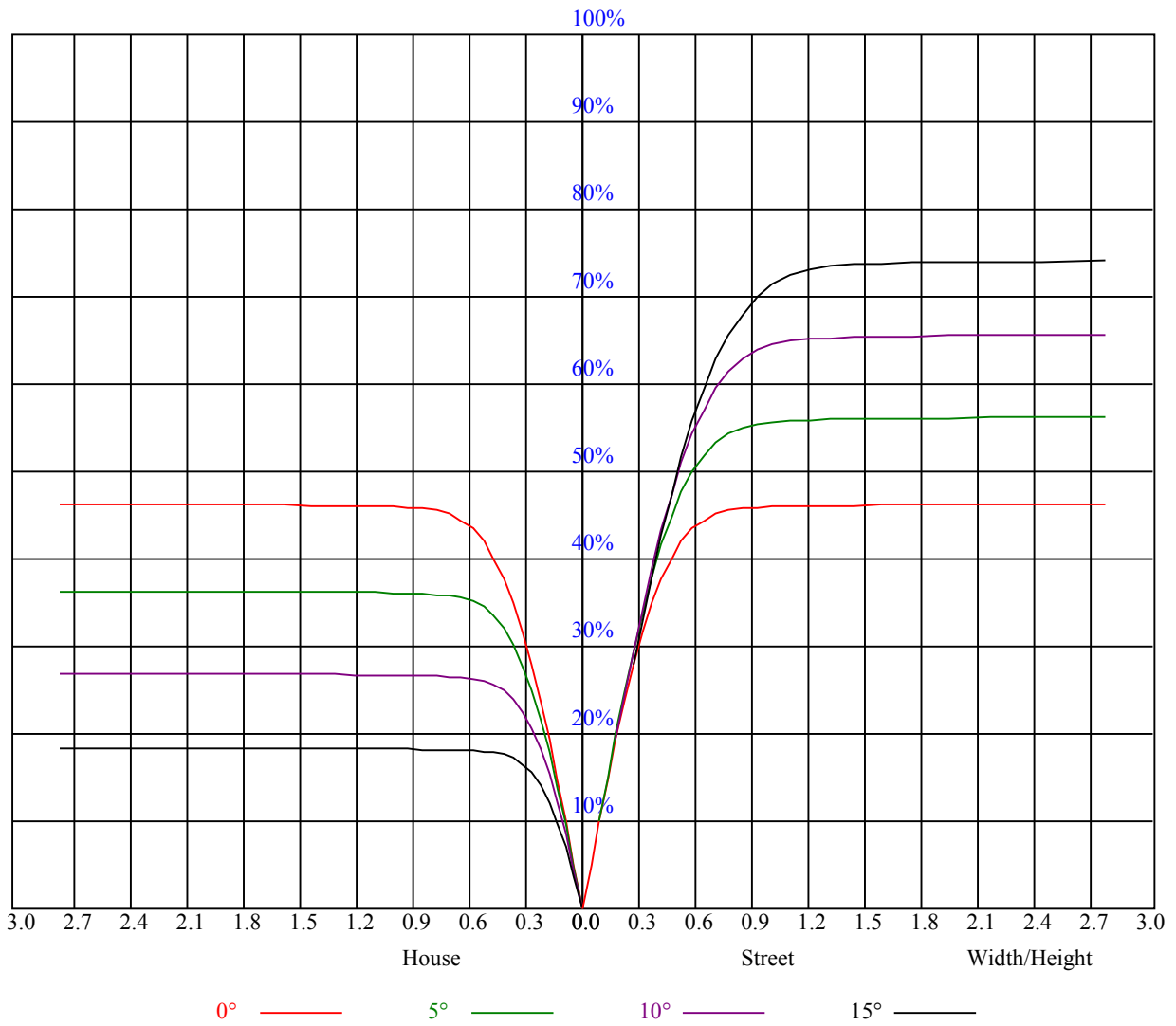


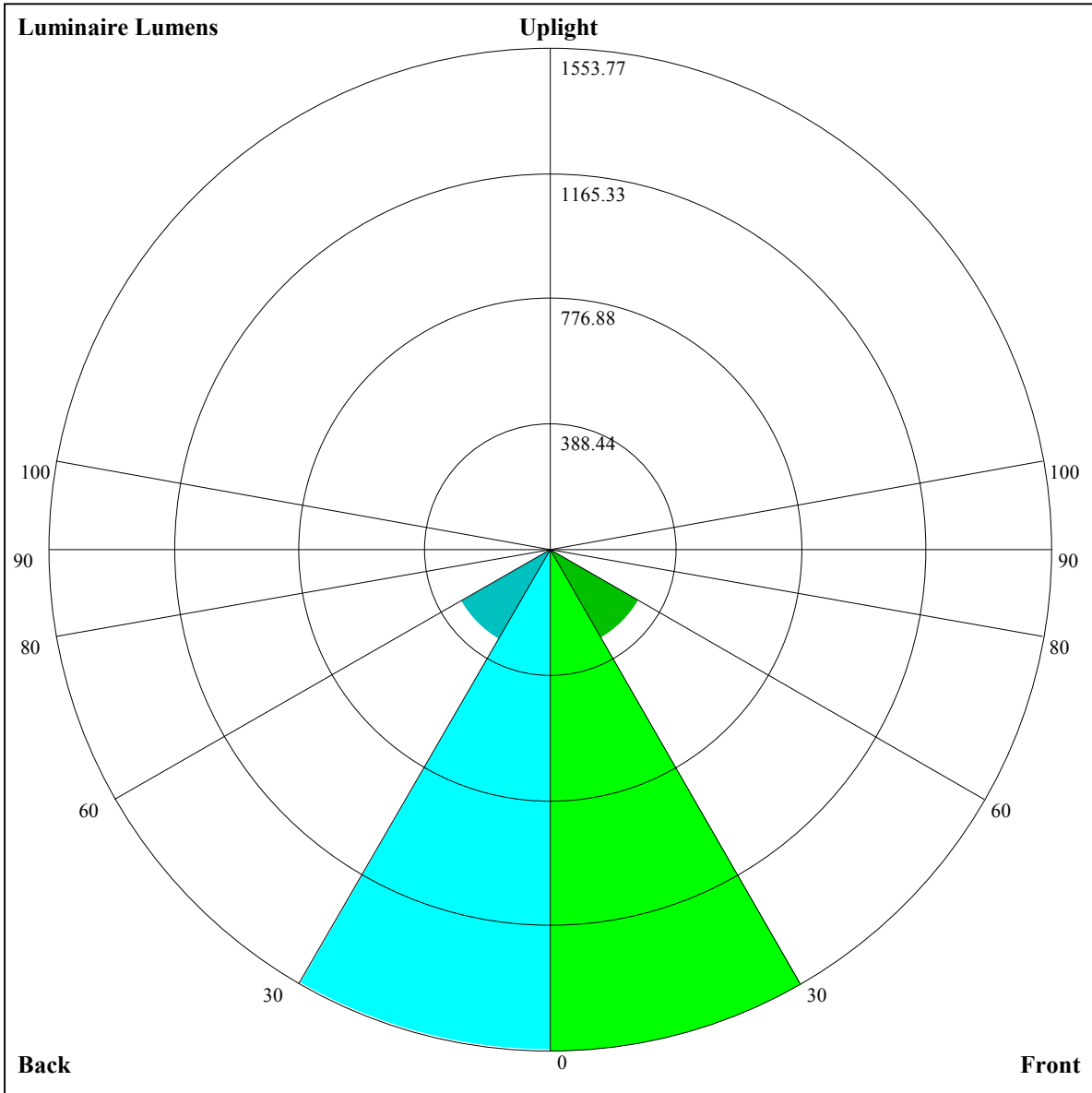
Illumination assessment according UGR											
Rf of Ceiling	70	70	50	50	30	70	70	50	50	30	
Rf of Wall	50	30	50	30	30	50	30	50	30	30	
Rf of Floor	20	20	20	20	20	20	20	20	20	20	
Room dimensions		Viewed crosswise					Viewed endwise				
X	Y										
2H	2H	非数字	非数字	非数字	非数字	非数字	非数字	非数字	非数字	非数字	
	3H	非数字	非数字	非数字	非数字	非数字	非数字	非数字	非数字	非数字	
	4H	非数字	非数字	非数字	非数字	非数字	非数字	非数字	非数字	非数字	
	6H	非数字	非数字	非数字	非数字	非数字	非数字	非数字	非数字	非数字	
	8H	非数字	非数字	非数字	非数字	非数字	非数字	非数字	非数字	非数字	
4H	12H	非数字	非数字	非数字	非数字	非数字	非数字	非数字	非数字	非数字	
	2H	非数字	非数字	非数字	非数字	非数字	非数字	非数字	非数字	非数字	
	3H	非数字	非数字	非数字	非数字	非数字	非数字	非数字	非数字	非数字	
	4H	非数字	非数字	非数字	非数字	非数字	非数字	非数字	非数字	非数字	
	6H	非数字	非数字	非数字	非数字	非数字	非数字	非数字	非数字	非数字	
8H	8H	非数字	非数字	非数字	非数字	非数字	非数字	非数字	非数字	非数字	
	12H	非数字	非数字	非数字	非数字	非数字	非数字	非数字	非数字	非数字	
	4H	非数字	非数字	非数字	非数字	非数字	非数字	非数字	非数字	非数字	
	6H	非数字	非数字	非数字	非数字	非数字	非数字	非数字	非数字	非数字	
	8H	非数字	非数字	非数字	非数字	非数字	非数字	非数字	非数字	非数字	
12H	12H	非数字	非数字	非数字	非数字	非数字	非数字	非数字	非数字	非数字	
	4H	非数字	非数字	非数字	非数字	非数字	非数字	非数字	非数字	非数字	
	6H	非数字	非数字	非数字	非数字	非数字	非数字	非数字	非数字	非数字	
	8H	非数字	非数字	非数字	非数字	非数字	非数字	非数字	非数字	非数字	
Variation with the observer position at spacings:											
S = 1.0H		非数字/非数字					非数字/非数字				
S = 1.5H		非数字/非数字					非数字/非数字				
S = 2.0H		非数字/非数字					非数字/非数字				
Standard tables:		BK0					BK0				
Uncorrected UGR		负无穷大					负无穷大				

UGR calculation is based on CIE Publ. 117 ,S/H = 0.25



RHOCC	80			70			50			30			10			0
RHOW	50	30	10	50	30	10	50	30	10	50	30	10	50	30	10	0
RCR	COEFFICIENTS OF UTILIZATION RHOFC=20 CU															
0	1.10	1.10	1.10	1.08	1.08	1.08	1.03	1.03	1.03	0.99	0.99	0.99	0.95	0.95	0.95	0.93
1	1.03	1.01	0.99	1.01	0.99	0.98	0.98	0.96	0.95	0.94	0.93	0.92	0.91	0.90	0.89	0.88
2	0.97	0.93	0.90	0.95	0.92	0.89	0.92	0.90	0.88	0.90	0.87	0.86	0.87	0.85	0.84	0.82
3	0.91	0.87	0.83	0.90	0.86	0.83	0.87	0.84	0.81	0.85	0.82	0.80	0.83	0.81	0.79	0.78
4	0.86	0.81	0.78	0.85	0.80	0.77	0.83	0.79	0.76	0.81	0.78	0.75	0.79	0.77	0.74	0.73
5	0.81	0.76	0.72	0.80	0.76	0.72	0.79	0.75	0.72	0.77	0.74	0.71	0.76	0.73	0.70	0.69
6	0.77	0.72	0.68	0.76	0.71	0.68	0.75	0.70	0.67	0.73	0.70	0.67	0.72	0.69	0.66	0.65
7	0.73	0.68	0.64	0.72	0.67	0.64	0.71	0.67	0.64	0.70	0.66	0.63	0.69	0.66	0.63	0.62
8	0.69	0.64	0.61	0.69	0.64	0.60	0.68	0.63	0.60	0.67	0.63	0.60	0.66	0.62	0.60	0.59
9	0.66	0.61	0.57	0.65	0.61	0.57	0.64	0.60	0.57	0.64	0.60	0.57	0.63	0.59	0.57	0.56
10	0.63	0.58	0.54	0.62	0.58	0.54	0.62	0.57	0.54	0.61	0.57	0.54	0.60	0.57	0.54	0.53





Luminaire Lumens:

FL=1553.77,FM=315.67,FH=9.68,FVH=1.37

BL=1552.68,BM=319.8,BH=9.54,BVH=1.36

UL=0,UH=0

BUG Rating:B3-U0-G0

Intensity data(cd)

C/γ(°)	0.0	1.0	2.0	3.0	4.0	5.0	6.0	7.0	8.0
0.0	5501.72	5520.64	5533.46	5530.68	5531.26	5520.11	5494.46	5444.90	5381.35
45.0	5485.58	5502.82	5517.33	5528.47	5523.43	5506.71	5500.03	5444.32	5413.15
90.0	5498.35	5503.40	5509.50	5505.61	5502.30	5457.14	5401.43	5346.82	5275.49
135.0	5478.33	5486.68	5492.26	5497.25	5490.00	5472.75	5441.01	5375.78	5321.22
180.0	5501.72	5486.68	5490.57	5481.11	5468.87	5454.36	5453.78	5410.89	5362.43
225.0	5485.58	5481.11	5469.39	5454.36	5446.58	5438.22	5418.14	5384.71	5333.99
270.0	5498.35	5489.47	5467.18	5480.53	5493.94	5484.42	5476.64	5468.87	5464.40
315.0	5478.33	5473.86	5499.51	5518.43	5518.43	5519.01	5513.96	5503.40	5447.68
360.0	5501.72	5520.64	5533.46	5530.68	5531.26	5520.11	5494.46	5444.90	5381.35
C/γ(°)	9.0	10.0	11.0	12.0	13.0	14.0	15.0	16.0	17.0
0.0	5317.28	5233.18	5140.67	5042.06	4909.44	4832.02	4624.19	4520.53	4341.72
45.0	5360.74	5297.25	5213.10	5111.12	4996.91	4871.55	4723.37	4564.00	4377.35
90.0	5186.92	5092.20	4977.98	4865.45	4696.04	4571.26	4396.85	4152.81	3989.60
135.0	5252.68	5177.46	5077.70	4976.30	4878.27	4733.94	4608.57	4454.25	4275.38
180.0	5312.28	5225.92	5183.03	5105.55	5018.09	4908.34	4793.02	4663.19	4522.21
225.0	5281.64	5232.60	5162.43	5097.77	5000.85	4945.66	4822.56	4694.94	4539.51
270.0	5413.15	5368.00	5346.82	5292.78	5235.38	5167.42	5085.53	4979.67	4868.23
315.0	5403.64	5375.25	5318.96	5242.64	5159.06	5059.35	4940.66	4797.48	4652.62
360.0	5317.28	5233.18	5140.67	5042.06	4909.44	4832.02	4624.19	4520.53	4341.72
C/γ(°)	18.0	19.0	20.0	21.0	22.0	23.0	24.0	25.0	26.0
0.0	4150.60	3943.87	3727.73	3500.93	3289.78	3084.21	2886.94	2704.18	2521.48
45.0	4181.24	3965.63	3759.48	3552.23	3338.24	3137.14	2943.76	2754.91	2572.15
90.0	3779.51	3575.04	3362.21	3161.06	2970.52	2792.80	2605.05	2425.08	2217.24
135.0	4083.16	3868.65	3659.19	3458.61	3253.57	3052.41	2874.70	2694.72	2519.22
180.0	4342.24	4151.18	3957.27	3748.86	3546.65	3341.03	3133.78	2932.62	2742.66
225.0	4371.26	4179.56	3980.09	3768.94	3546.08	3326.00	3110.39	2912.59	2724.84
270.0	4734.51	4581.29	4409.68	4199.06	3987.92	3765.58	3543.29	3316.54	3102.55
315.0	4476.54	4302.71	4091.52	3863.08	3640.22	3425.18	3218.45	3006.73	2806.73
360.0	4150.60	3943.87	3727.73	3500.93	3289.78	3084.21	2886.94	2704.18	2521.48
C/γ(°)	27.0	28.0	29.0	30.0	31.0	32.0	33.0	34.0	35.0
0.0	2340.92	2142.03	1930.31	1712.43	1499.61	1087.83	1087.83	929.57	735.51
45.0	2434.54	2197.74	1983.24	1809.94	1548.07	1378.14	1168.10	964.21	770.83
90.0	1994.96	1773.72	1552.54	1050.51	1050.51	1008.73	809.57	628.38	462.60
135.0	2333.67	2120.32	1893.51	1669.02	1445.00	1234.96	1026.60	904.55	642.68
180.0	2630.65	2372.15	2167.10	2036.17	1724.16	1593.22	1373.14	1160.32	952.49
225.0	2533.14	2350.38	2142.03	1922.53	1703.55	1484.58	1033.69	1033.69	913.33
270.0	2900.87	2700.29	2586.65	2326.99	2113.07	1979.87	1759.27	1543.66	1325.78
315.0	2613.41	2491.94	2289.10	1988.81	1858.45	1640.58	1317.43	1057.29	978.08
360.0	2340.92	2142.03	1930.31	1712.43	1499.61	1087.83	1087.83	929.57	735.51
C/γ(°)	36.0	37.0	38.0	39.0	40.0	41.0	42.0	43.0	44.0
0.0	560.84	405.31	279.69	187.02	137.08	110.43	90.09	75.64	65.23
45.0	590.33	432.64	298.40	298.40	147.12	118.06	96.82	81.31	74.74
90.0	323.42	224.18	165.89	131.77	106.02	88.09	76.16	65.60	56.98
135.0	542.39	391.96	313.96	313.96	137.14	108.54	88.67	74.74	64.07
180.0	760.26	579.76	423.18	296.14	296.14	148.07	117.16	95.66	79.42
225.0	722.37	544.81	390.01	263.08	173.98	128.04	102.29	83.47	70.43
270.0	1116.85	916.27	725.73	551.33	394.74	289.46	289.46	121.05	96.56
315.0	777.66	597.22	440.37	309.65	215.98	157.06	123.57	109.49	85.36
360.0	560.84	405.31	279.69	187.02	137.08	110.43	90.09	75.64	65.23

Intensity data(cd)

C/γ(°)	45.0	46.0	47.0	48.0	49.0	50.0	51.0	52.0	53.0
0.0	56.61	49.41	43.36	38.32	34.53	32.48	28.54	26.33	25.12
45.0	64.65	53.25	49.25	43.15	38.32	34.48	31.22	28.65	26.28
90.0	49.62	43.78	39.00	34.95	31.75	29.07	27.23	24.65	23.29
135.0	55.24	47.99	42.00	37.06	33.11	29.86	27.81	25.60	23.65
180.0	67.75	58.45	52.04	45.47	40.11	35.58	32.01	29.07	26.60
225.0	60.60	52.40	45.41	39.63	34.95	32.69	28.38	26.02	24.81
270.0	78.69	67.81	62.08	50.72	46.57	40.89	36.11	32.38	29.22
315.0	73.27	67.02	57.71	50.20	43.99	39.00	34.90	31.59	28.80
360.0	56.61	49.41	43.36	38.32	34.53	32.48	28.54	26.33	25.12
C/γ(°)	54.0	55.0	56.0	57.0	58.0	59.0	60.0	61.0	62.0
0.0	22.60	21.71	20.18	18.87	17.71	16.71	15.66	14.72	13.93
45.0	24.28	22.60	21.03	19.61	18.29	17.19	16.14	15.14	14.19
90.0	21.60	20.13	18.82	17.61	16.56	15.51	14.72	13.82	12.98
135.0	21.97	20.50	19.13	17.98	16.87	15.87	14.93	14.14	13.35
180.0	24.49	22.65	21.03	19.66	18.40	17.19	16.14	15.19	14.30
225.0	22.44	21.45	20.03	18.76	17.61	16.56	15.66	14.77	13.98
270.0	26.86	24.76	22.97	21.39	19.97	18.82	17.66	16.66	15.72
315.0	26.44	24.44	22.60	20.97	19.61	18.29	17.19	16.08	15.14
360.0	22.60	21.71	20.18	18.87	17.71	16.71	15.66	14.72	13.93
C/γ(°)	63.0	64.0	65.0	66.0	67.0	68.0	69.0	70.0	71.0
0.0	13.14	12.40	11.67	11.09	10.46	9.83	9.30	8.73	8.30
45.0	13.40	12.62	11.93	11.41	10.62	10.20	9.67	8.99	8.52
90.0	12.30	11.56	10.88	10.35	9.72	9.25	8.67	8.09	7.67
135.0	12.56	11.98	11.30	10.72	10.14	9.62	9.15	8.57	8.09
180.0	13.46	12.67	11.98	11.41	10.72	10.46	9.83	9.20	8.78
225.0	13.19	12.51	11.83	11.25	10.62	10.14	9.62	9.04	8.67
270.0	14.88	14.03	13.25	12.51	12.19	11.51	10.67	10.35	9.78
315.0	14.30	13.46	12.67	12.04	11.62	10.99	10.14	9.78	9.25
360.0	13.14	12.40	11.67	11.09	10.46	9.83	9.30	8.73	8.30
C/γ(°)	72.0	73.0	74.0	75.0	76.0	77.0	78.0	79.0	80.0
0.0	7.73	7.25	6.99	6.36	5.94	5.52	4.99	4.52	3.99
45.0	8.04	7.57	7.04	6.52	6.04	5.57	5.05	4.52	4.05
90.0	7.15	6.68	6.41	5.89	5.15	4.89	4.36	3.94	3.47
135.0	7.83	7.15	6.73	6.47	5.94	5.47	5.05	4.57	3.99
180.0	8.36	7.83	7.36	6.89	6.47	5.99	5.52	4.99	4.52
225.0	8.04	7.73	7.31	6.83	6.36	5.89	5.47	4.99	4.47
270.0	9.30	8.78	8.36	7.83	7.41	6.89	6.52	5.99	5.52
315.0	8.67	8.25	7.73	7.25	6.73	6.20	5.78	5.26	4.73
360.0	7.73	7.25	6.99	6.36	5.94	5.52	4.99	4.52	3.99
C/γ(°)	81.0	82.0	83.0	84.0	85.0	86.0	87.0	88.0	89.0
0.0	3.63	3.10	2.79	2.37	2.21	1.94	1.68	1.37	1.00
45.0	3.68	3.26	2.84	2.37	2.16	1.84	1.58	1.26	0.95
90.0	3.10	2.73	2.37	2.16	1.84	1.47	1.21	1.00	1.00
135.0	3.63	3.21	2.73	2.42	2.10	1.84	1.42	1.16	0.89
180.0	4.05	3.47	3.15	2.79	2.47	2.16	1.79	1.47	1.26
225.0	4.05	3.63	3.21	2.84	2.47	2.21	1.84	1.58	1.26
270.0	4.99	4.57	3.94	3.47	3.10	2.63	2.37	2.05	1.79
315.0	4.26	3.94	3.36	2.94	2.63	2.26	2.00	1.73	1.42
360.0	3.63	3.10	2.79	2.37	2.21	1.94	1.68	1.37	1.00

Intensity data(cd)

C/γ(°)	90.0
0.0	1.10
45.0	1.05
90.0	0.95
135.0	0.89
180.0	0.89
225.0	1.10
270.0	1.42
315.0	1.26
360.0	1.10